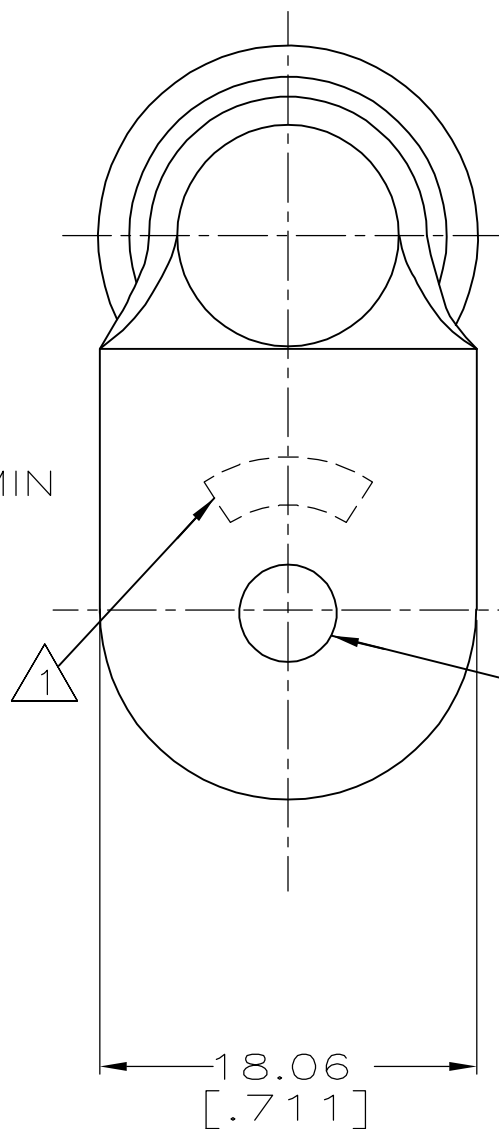
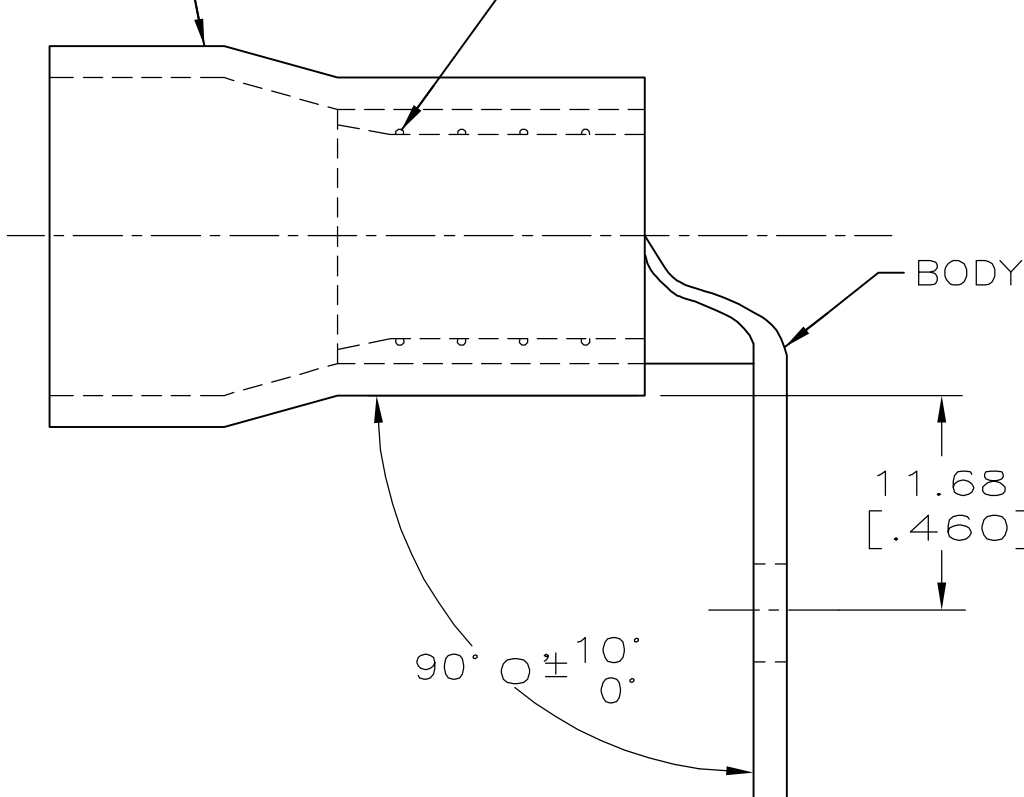


LOC	DIST	REVISIONS			
P	LTR	DESCRIPTION	DATE	DWN	APVD
G	14	D1 REV PER ECR 06-012422	25MAY06	JR	TM

SLEEVE DIMPLED SURFACE



AMP WIRE RANGE	RU FILE E13288	SR LR7189 Certified
2 AWG STRANDED	2 AWG STRANDED	2 AWG STRANDED

NOTE

1. STAMP AMP 2* LOCATE APPROX AS SHOWN
2. TONGUE MATERIAL THK 1.45±0.08 [.057±.003]
3. WIRE INSULATION DIA 14.22 [.560] MAX

5.00±0.08 [.197±.003] DIA
(FOR #10 STUD)

50	LOOSE PIECE	184150-1
QTY	PACKAGE TYPE	PART NO

<p>AMP INCORPORATED CUSTOMER SERVICE SYSTEM</p>		<p>MAX RECOMMENDED OPERATING TEMPERATURE: 90° C [194° F]</p>	<p>THIS DRAWING IS A CONTROLLED DOCUMENT FOR AMP INCORPORATED. IT IS SUBJECT TO CHANGE AND THE CONTROLLING ENGINEERING ORGANIZATION SHOULD BE CONTACTED FOR THE LATEST REVISION.</p>		<p>DWN L OLMEDA 05SEP95</p>	<p>AMP AMP Incorporated Harrisburg, PA 17105-3608</p>					
<p>FOR ADDITIONAL PRODUCT INFORMATION OR COPIES OF DRAWINGS AND TECHNICAL DOCUMENTS</p>	<p>PRODUCT INFORMATION CENTER 1-800-522-6752</p>	<p>VOLTAGE RATING: 600V MAX (1000V FIXTURE OR SIGN)</p>	<p>DIMENSIONS: mm [in]</p>	<p>TOLERANCES UNLESS OTHERWISE SPECIFIED: 0 PLC ±- 1 PLC ±- 2 PLC ±0.20 [.008] 3 PLC ±- 4 PLC ±- ANGLES ±-</p>	<p>CHK M ELLIS 05SEP95</p>		<p>NAME TERMINAL, RING TONGUE-BENT 90° PLASTI-GRIP, WIRE SIZE, 2 AWG</p>				
<p>FOR APPLICATION TOOLING INFORMATION</p>	<p>TOOLING ASSISTANCE CENTER 1-800-722-1111</p>	<p>CIRCULAR MIL AREA: 26.65mm² - 42.41mm² [52,600 - 83,700]</p>		<p>MATERIAL BODY, CU, PER ASTM B152 SLEEVE, PVC, COLOR, RED</p>	<p>FINISH TIN PLATE PER MIL-T-10727</p>	<p>APVD G NGO 05SEP95</p>					
<p>FOR ORDER ENTRY</p>	<p>1-800-526-5142</p>					<p>PRODUCT SPEC UL 486A</p>					
<p>CUSTOMER DRAWING</p>						<p>SIZE A3</p>	<p>CAGE CODE 00779</p>	<p>DRAWING NO C-184150</p>	<p>SCALE 6:1</p>	<p>SHEET 1 OF 1</p>	<p>REV D1</p>